

## Mezzanine Inspection Report (Scoping)

Date: 01/16/2015	Station Name: E05 Georgia Avenue	Mezzanine #: 076	Completed By: Byron Williams
------------------	----------------------------------	------------------	------------------------------

### Summary

All communications and power ducts for faregate arrays scoped. The faregate array ducts for both power and communications have ducts that run from the kiosk to a handhole and then through the faregates. Pull string was successfully installed in both upper and lower communications duct for the faregate arrays. Scoping and pull string installation was completed for the power duct run from the kiosk to handhole 1 towards the AFC panel. The 2" conduit that runs from handhole 1 to the AFC panel is at capacity and pull string was not installed. A proposed run from handhole 1 to AFC panel is included in the photos below.

Scanning is not required at this mezzanine.

### Scoping of Faregate Array(s)

Task	Yes/No	Notes
<b>Communications Duct – Upper Faregate Array (3-Gates)</b>		
Was video scoping completed for the entire duct run?	Yes	Refer to WMATA Georgia Ave Petworth 6inch Upper Comm Faregate manhole to Kiosk.avi and WMATA GEorgia Ave Petworth 6inch Upper Comm Faregate.avi files
Were pull strings installed at all faregates in the array?	Yes	
Were there any obstructions or blockages? Provide details of type and specific location.	No	
Is the duct at capacity? Provide additional details about the dimensions of ducts and number of wires.	No	6" duct less than 10 wires
<b>Communications Duct - Lower Faregate Array (3-Gates)</b>		
Was video scoping completed for the entire duct run?	Yes	Refer to WMATA Georgia Ave Petworth 6inch Lower Comm Faregate Manhole to Kiosk.avi and WMATA Georgia Ave Petworth 6inch Lower Comm Faregates.avi files.
Were pull strings installed at all faregates in the array?	Yes	
Were there any obstructions or blockages? Provide details of type and specific location.	No	
Is the duct at capacity? Provide additional details about the dimensions of ducts and number of wires.	No	6" duct less than 10 wires
<b>Power Duct - Upper Faregate Array (3-Gates)</b>		
Was video scoping completed for the entire duct run?	Yes	Refer to WMATA Georgia Ave Petworth 6inch Upper Power Faregate Manhole to Kiosk.avi and WMATA Georgia Ave Petworth 6inch Upper Power Faregate.avi files.
Were there any obstructions or blockages? Provide details of type and specific location.	No	
Is the duct at capacity? Provide additional details about the dimensions of ducts and number of wires.	No	6" duct less than 10 wires
<b>Power Duct - Lower Faregate Array (3-Gates)</b>		
Was video scoping completed for the entire duct run?	Yes	Refer to WMATA Georgia Ave Petworth 6inch Lower Power Faregate Manhole to Kiosk.avi and WMATA Georgia Ave Petworth 6inch Lower Power Faregates.avi files.
Were there any obstructions or blockages? Provide details of type and specific location.	No	
Is the duct at capacity? Provide additional details about the dimensions of ducts and number of wires.	No	6" duct less than 10 wires

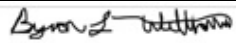
Scoping of Power Duct - Kiosk to AFC Panel		
Task	Yes/No	Notes
<b>Kiosk to Handhole 1 (55' run)</b>		
Was video scoping completed for the entire duct / conduit run?	Yes	Refer to WMATA Georgia Ave Power Kiosk to Floor Box.avi file.
Was pull string installed?	Yes	
Were there any obstructions or blockages? Provide details of type and specific location.	No	
Is the duct / conduit at capacity? Provide additional details about the dimensions of duct / conduit and number of wires.	No	6" duct, less than 15 wires
<b>Handhole 1 to AFC Panel (20' run)</b>		
Was video scoping completed for the entire duct / conduit run?	No	2" conduit – no scoping required
Was pull string installed?	No	
Were there any obstructions or blockages? Provide details of type and specific location.	No	
Is the duct / conduit at capacity? Provide additional details about the dimensions of duct / conduit and number of wires.	Yes	2" conduit has more than 20 wires and is at capacity
<b>Observations / Issues / Next Steps</b>		
<p>Existing power run from kiosk to AFC panel is approximately 75 feet.</p> <p>Proposed run would use existing duct from kiosk to handhole 1 of 55 feet and a new conduit run of 20 feet for a new total run from kiosk to AFC panel of approximately 75 feet.</p>		
<b>Sign Off</b>		
	<b>GFP Representative</b>	<b>WMATA PRGM</b>
<b>Name:</b>	Byron Williams	
<b>Signature:</b>		
<b>Date:</b>	01/16/2015	

Photo #1 – E05 Georgia Avenue: Duct run from kiosk towards handhole 1



Photo #2 – E05 Georgia Avenue: Duct run into handhole 1 and conduit from handhole 1 to AFC panel





Photo #3 – E05 Georgia Avenue: AFC panel with existing at capacity conduit

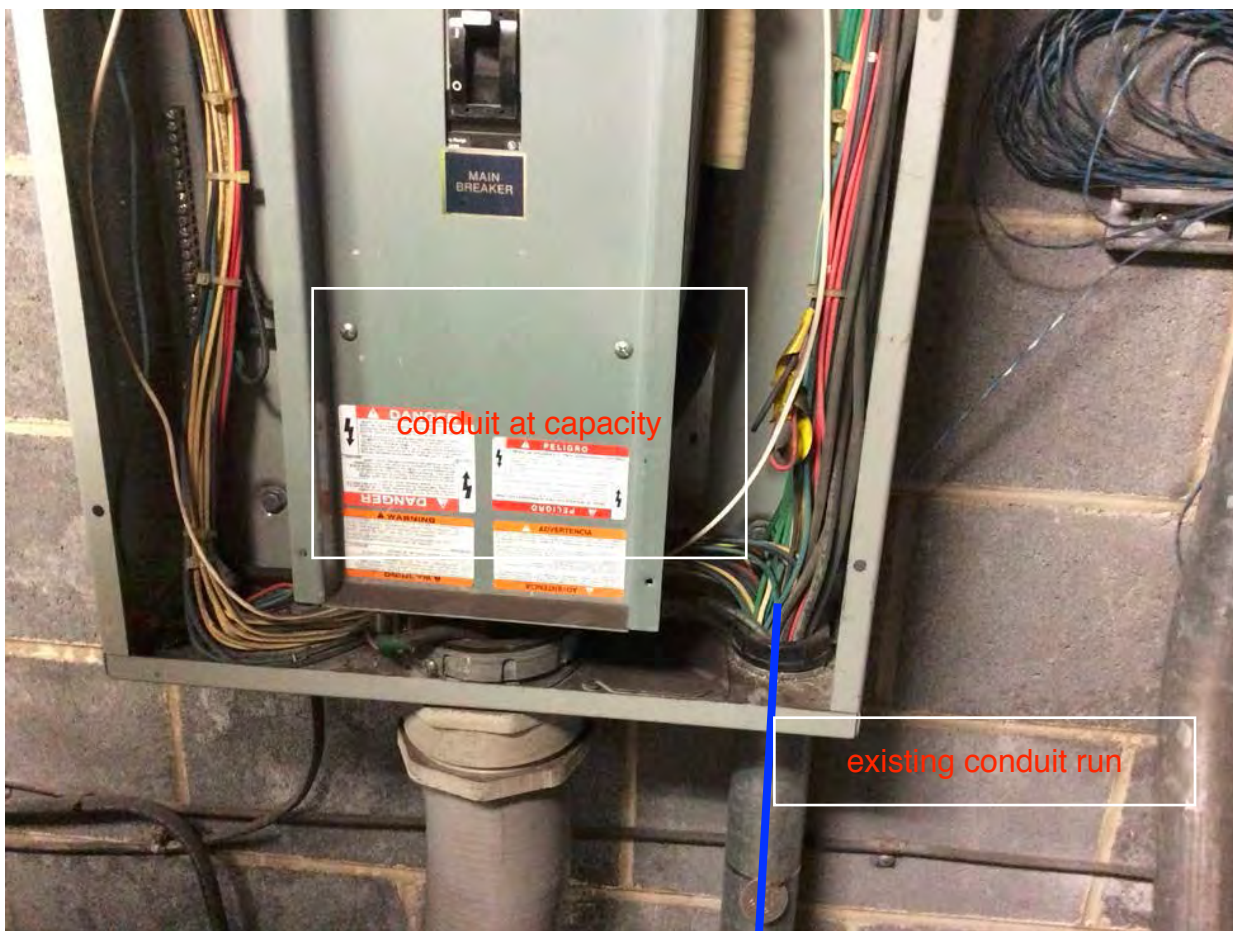


Photo #4: E05 Georgia Avenue: AFC panel with proposed conduit run from handhole 1

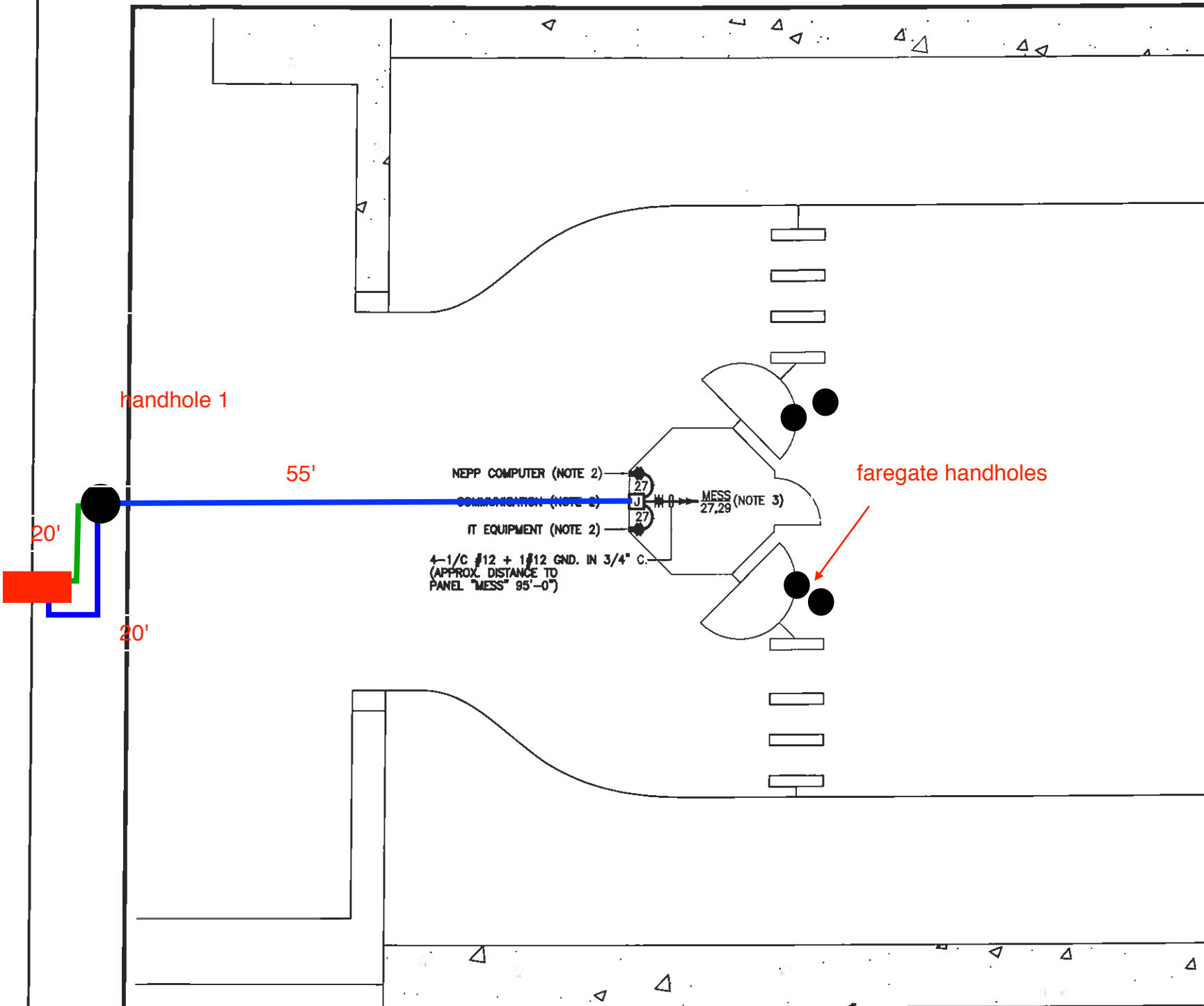


**DRAWING NOTES:**

1. USE EXISTING UNDER FLOOR DUCT FOR POWER WIRING. ALL OUTSIDE FLOOR DUCT WIRING SHALL BE IN CONDUIT.
2. VERIFY WITH WMATA PERSONNEL FOR LOCATION OF RECEPTACLES & JUNCTION BOXES.
3. CONNECT CIRCUIT #27 & #29 TO TWO (2) EXISTING 20A, 1P SPARE CIRCUIT BREAKERS IN THE EXISTING PANEL "MESS", SEE PANEL SCHEDULE ON DWG. E05-E-102.

**SAFETY PRECAUTION:**

1. ALL WORK SHALL COMPLY WITH WMATA SAFETY RULES, AND DE-ENERGIZATION POLICIES.



**MEZZANINE KIOSK - POWER**  
SCALE: 1/4" = 1'- 0"

CONTRACT NO.  
14-FQ10060-CENI-24

DESIGNED	C. MEO	08-14
DRAWN	C. MEO	08-14
CHECKED	B. DUB	08-14
APPROVED	N/A	

NUMBER	DESCRIPTION	DATE	BY

DATE	BY	DESCRIPTION

WASHINGTON METROPOLITAN AREA TRANSIT AUTHORITY

DEPARTMENT OF TRANSIT INFRASTRUCTURE AND ENGINEERING SERVICES  
OFFICE OF INFRASTRUCTURE RENEWAL PROGRAM

**GFP** A Gannett Fleming/Parsons JOINT VENTURE

APPROVED \_\_\_\_\_ SUBMITTED \_\_\_\_\_  
PROJECT MANAGER

NEW ELECTRONIC PAY PROGRAM (NEPP)  
IN METRORAIL STATIONS  
GEORGIA AVENUE  
MEZZANINE KIOSK - POWER

SCALE: AS SHOWN DRAWING NO.: E05-E-101

## Mezzanine Inspection Report (Scoping)

Date: 1/21/2015	Station Name: E07 West Hyattsville	Mezzanine #: 077	Completed By: Mike Butler
-----------------	------------------------------------	------------------	---------------------------

### Summary

Video scoping was completed for communications and power ducts in the faregate arrays. Pull strings were successfully installed in the communications duct for the faregate array. Video scoping and pull string installation was completed for the power duct run from the kiosk to the AFC panel.

Scanning is not required at this mezzanine.

### Scoping of Faregate Array(s)

Task	Yes/No	Notes
<b>Communications Duct – Faregate Array (8-Gates)</b>		
Was video scoping completed for the entire duct run?	Yes	Refer to "WMATA West Hyattsville 3inch Comm Kiosk to Fairgates Video.avi"
Were pull strings installed at all faregates in the array?	Yes	
Were there any obstructions or blockages? Provide details of type and specific location.	No	Minor dust and rust
Is the duct at capacity? Provide additional details about the dimensions of ducts and number of wires.	No	3" duct, less than 10 wires
<b>Power Duct - Faregate Array (8 Gates)</b>		
Was video scoping completed for the entire duct run?	Yes	Refer to "WMATA West Hyattsville 6inch Power Video.avi"
Were there any obstructions or blockages? Provide details of type and specific location.	No	Minor dust and rust
Is the duct at capacity? Provide additional details about the dimensions of ducts and number of wires.	No	6" duct less than 10 wires




Scoping of Power Duct - Kiosk to AFC Panel		
Task	Yes/No	Notes
<b>Kiosk to Handhole 1 (40' Run)</b>		
Was video scoping completed for the entire duct / conduit run?	Yes	Refer to "WMATA West Hyattsville 6inch Power Kiosk to H.H. Video.avi"
Was pull string installed?	Yes	
Were there any obstructions or blockages? Provide details of type and specific location.	No	Minor dust and rust
Is the duct / conduit at capacity? Provide additional details about the dimensions of duct / conduit and number of wires.	No	6" duct less than 10 wires
<b>Handhole 1 to Handhole 2 (20' Run)</b>		
Was video scoping completed for the entire duct / conduit run?	Yes	Refer to "WMATA West Hyattsville 6inch Power H.H.1 to H.H.2 Video.avi"
Was pull string installed?	Yes	
Were there any obstructions or blockages? Provide details of type and specific location.	No	Minor dust and rust
Is the duct / conduit at capacity? Provide additional details about the dimensions of duct / conduit and number of wires.	No	6" duct less than 10 wires
<b>Handhole 2 to Handhole 3 (5' Run)</b>		
Was video scoping completed for the entire duct / conduit run?	Yes	Refer to "WMATA West Hyattsville 6inch Power H.H.2 to H.H.3 Video.avi"
Was pull string installed?	Yes	
Were there any obstructions or blockages? Provide details of type and specific location.	No	Minor dust and rust
Is the duct / conduit at capacity? Provide additional details about the dimensions of duct / conduit and number of wires.	No	6" duct less than 10 wires
<b>Handhole 3 to AFC Panel (20' Run)</b>		
Was video scoping completed for the entire duct / conduit run?	Yes	Refer to "WMATA West Hyattsville 6inch Power H.H.3 to AFC Panel J-box Video.avi"
Was pull string installed?	Yes	
Were there any obstructions or blockages? Provide details of type and specific location.	No	Minor dust and rust
Is the duct / conduit at capacity? Provide additional details about the dimensions of duct / conduit and number of wires.	No	6" duct less than 10 wires
<b>Observations / Issues / Next Steps</b>		
Total run from kiosk to AFC panel is approximately 85 feet.		
<b>Sign Off</b>		
	<b>GFP Representative</b>	<b>WMATA PRGM</b>
<b>Name:</b>	Mike Butler	
<b>Signature:</b>		
<b>Date:</b>	02/24/2015	

Photo #1 – E07 West Hyattsville: Duct run from kiosk towards handhole 1



Photo #2 – E07 West Hyattsville: Duct run from handhole 1 to handhole 2

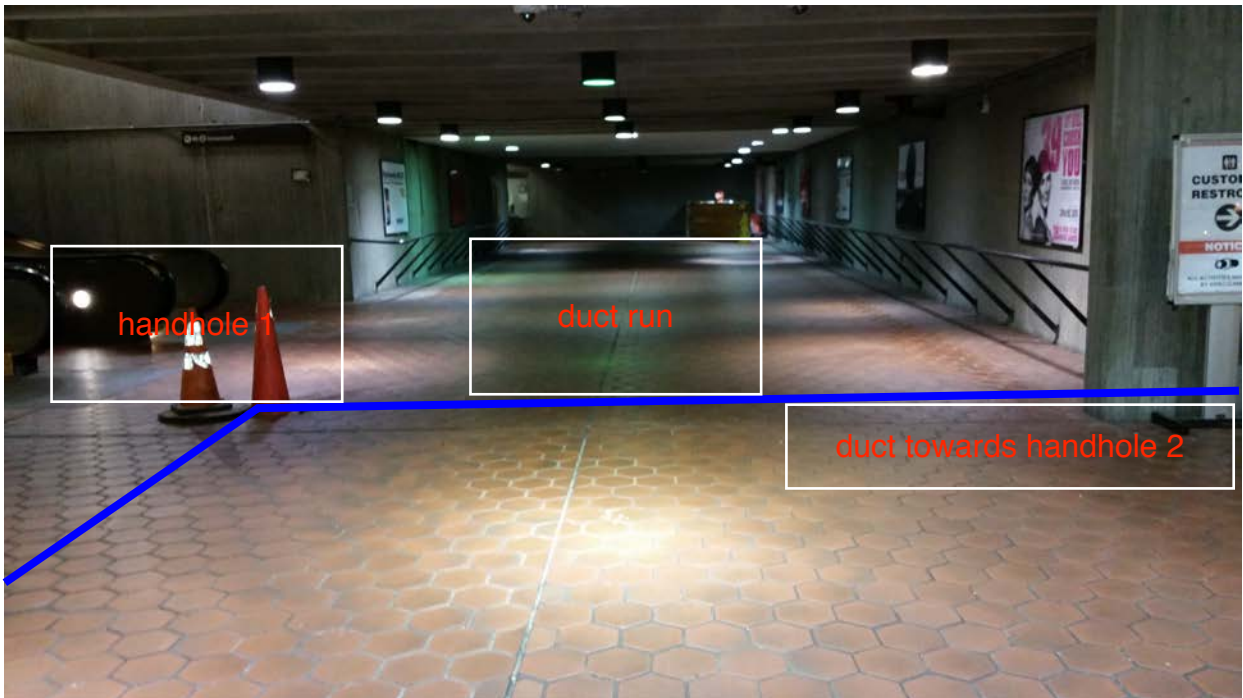
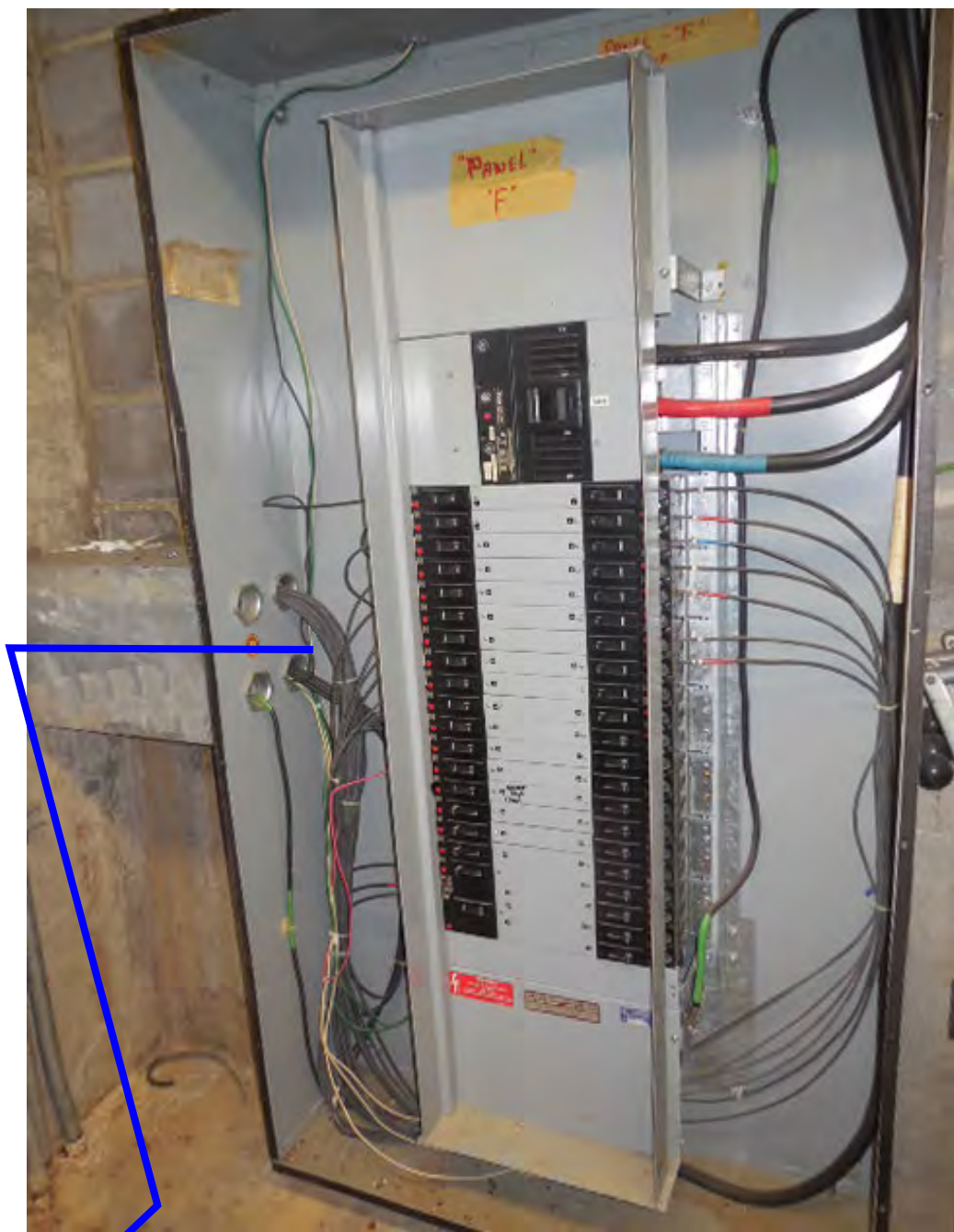


Photo #3 – E07 West Hyattsville: Duct run from handhole 2 to handhole 3





Photo #4 – E07 West Hyattsville: Duct run to AFC panel from handhole 3

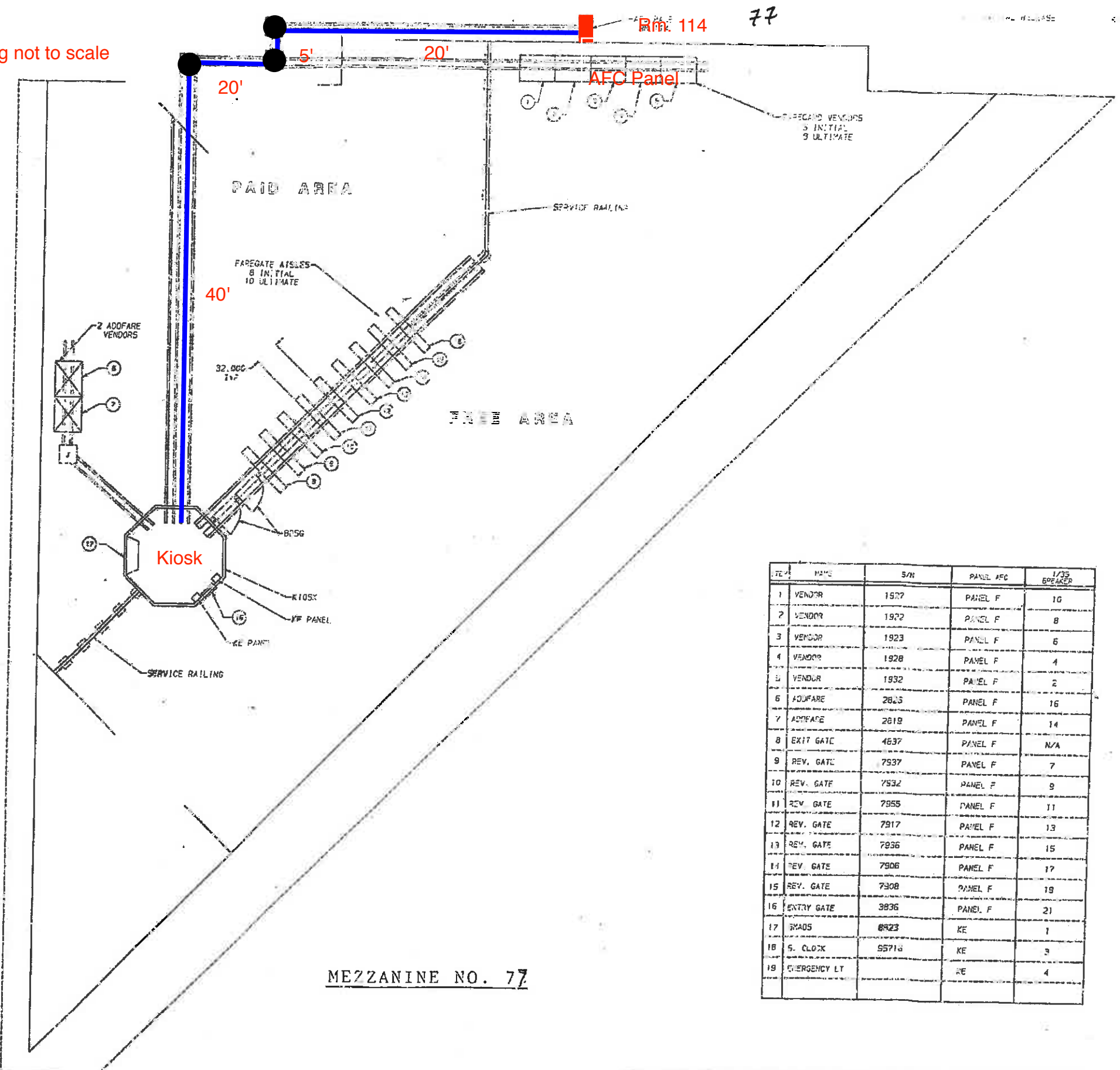




Drawing not to scale

NOTES:

1. FC: VENDOR AND ADDFARE INSTALLATION SEE 931-4002.
2. FC: SKADS INSTALLATION SEE 931-4001.
3. FC: ENTRY, EXIT AND REVERSIBLE GATE INSTALLATION SEE 931-4003.
4. FC: B1-DIRECTIONAL SERVICE GATE INSTALLATION SEE 931-4005.
5. FC: A TYPICAL MEZZANINE INSTALLATION SEE 931-4000.
6. CIRCUIT BREAKERS WITH COMMON NEUTRAL:  
2, 4 & 6, 8 & 10, 7, 9 & 11, 13, 15 & 17, 19 & 21.



ITEM	NAME	S/N	PANEL AFC	1/32 BREAKER
1	VENDOR	1927	PANEL F	10
2	VENDOR	1922	PANEL F	8
3	VENDOR	1923	PANEL F	6
4	VENDOR	1928	PANEL F	4
5	VENDOR	1932	PANEL F	2
6	ADDFARE	2825	PANEL F	16
7	ADDFARE	2819	PANEL F	14
8	EXIT GATE	4637	PANEL F	N/A
9	REV. GATE	7537	PANEL F	7
10	REV. GATE	7532	PANEL F	9
11	REV. GATE	7955	PANEL F	11
12	REV. GATE	7917	PANEL F	13
13	REV. GATE	7936	PANEL F	15
14	REV. GATE	7906	PANEL F	17
15	REV. GATE	7908	PANEL F	19
16	ENTRY GATE	3836	PANEL F	21
17	SKADS	8923	KE	1
18	S. CLOCK	55716	KE	3
19	EMERGENCY LT		KE	4

MEZZANINE NO. 77

NOTICE OF PROPRIETARY RIGHTS IN DATA  
 THE DATA CONTAINED HEREIN IS PROPRIETARY TO CUBIC WESTERN DATA CORP.  
 AND IS NOT TO BE REPRODUCED, COPIED, TRANSMITTED, OR USED IN ANY MANNER WITHOUT THE WRITTEN PERMISSION OF CUBIC WESTERN DATA CORP.

SEE SEPARATE PL. FOR DIMENSIONS AND SPECIFICATIONS. DIMENSIONS ARE TO FACE UNLESS OTHERWISE NOTED.

DO NOT SCALE DRAWING

CUBIC WESTERN DATA  
 W. HYATTSVILLE STATION  
 MEZZANINE LAYOUT  
 931-4002

8 7 6 5 4 3 2 1